

Christmas Menu & Poster Display



Outdoor Polished GOLD or SILVER Wall Mounted Illuminated or Non-Illuminated Lockable Menu Display Cases

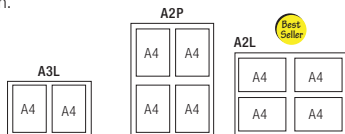
The outdoor highly polished frames are ideal for hospitality, corporate, finance and catering applications. All showcases have 2 support stays and matching locks. Easy to mount with concealed fixings. Unbreakable Polycarbonate glazing as standard. Concealed Ultra-bright T2 illumination. Felt pin back board for longer life and improved pin fixing. Double sealed for weather protection.



Prices from
£303.45



Standard Stock Range:
Gold frame - Burgundy Felt
Silver frame - Black Felt



Overall size (W x H) mm	511 x 452	585 x 685	685 x 585
Illuminated Display Case	SH003	SH035	SH005
Non illuminated Display Case	SH057	SH059	SH060

Bespoke Range: We have a wide choice of fabric colours, frame colours and display sizes available. The display cases can also be adapted for post or rail mounted fixing. Details / Quote on request.

Please state colour of frame required after product code:
(G) after product code for Gold frame.
(S) after product code for Silver frame.

'MERCURY' Our Budget Lockable Menu & Poster Display Case



Prices from
£55.50

Lightweight lockable menu/poster display. Silver anodised durable 45mm aluminium frame with hinged door. 2mm shatterproof permanently bonded door panel. Interior clips hold menu/poster in position. Sheltered Outdoor or Interior use.



Single lock up to A2
Twin Locks larger than A2

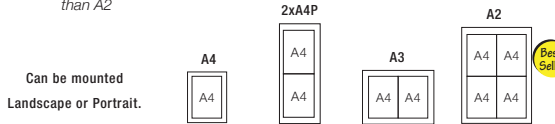


Supporting door rod



SH059

Internal fixing and poster clip detail



Can be mounted
Landscape or Portrait.

Overall size (W x H)mm	266 x 358	313 x 759	367 x 490	490 x 664
Mercury Showcase	SH047	SH048	SH049	SH050

'DOUBLE SIDED FRAME' Ideal WINDOW DISPLAY or ceiling hanging

Double sided poster display. 25mm silver anodised frame. Easy slide in, slide out poster change - side entry. Hangers provide dual wall mount or hanging capability. Available in landscape or portrait format. 2 x anti-glare poster cover sheets included.

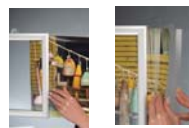
Best Seller



Prices from
£9.75



Sliding Hangers



Easy slide in poster change

Poster Size	Dimensions (W x H)mm	Order code (Landscape)	Order Code (Portrait)
A4	224 x 331	PD096	PD097
A3	331 x 434	PD098	PD099
A2	434 x 608	PD100	PD101
A1	608 x 855	PD102	PD103

Christmas Menu Covers & Poster Holders



'JAZZ' Menu Covers

Substantial 300 micron clear PVC to display your personal style of Menu/Wine List Black PVC trim with gold corners as standard.

Single cover shows 2 sides

Gold corner detail



'JAZZ' Single Menu Covers Shows 2 sides	Product code
A4 (297x210)	MCP01
A5 (210x148)	MCP02

Best Seller

Feature your Festive Menu or Function with these stylish menu covers



Double cover shows 4 sides

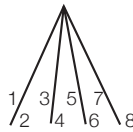
Prices from £3.48

'JAZZ' Double Menu Covers Shows 4 sides	Product code
A4 (297x210)	MCP03
A5 (210x148)	MCP04



'QUARTET' Menu Covers

Substantial 300 micron clear PVC to display your personal style of Menu/Wine List Black PVC trim with gold corners as standard.



- Shows 8 sides as standard
- Facility for additional pockets

Prices from £7.66



'QUARTET' Menu Covers Shows 8 sides	Product code
A4 (297x210)	MCP05
1/3 A3 (297x140)	MCP06
A5 (210x148)	MCP07



'SATELLITE' Modern & Contemporary Menu / Poster Holder System

Indoor or Outdoor Use

The 'SATELLITE' range is a user-friendly system for posters, prices, directional signage, information, menus and many other display and POS functions. The magnetic front screen secures the graphic, making it easily changeable.



Best Seller

Prices from £102.15

Free Standing Units	Black frame / steel header	Grey frame / steel header
A4 Landscape/Portrait	SN035	SN031
A3 Landscape/Portrait	SN036	SN029

Prices from £14.92

Table Top Units	Black frame / steel header	Grey frame / steel header
A3 Portrait	SN039	SN040
A4 Portrait	SN041	SN024
A5 Portrait	SN042	SN025





Christmas Table Top Display

'SNAP' Snap open, snap shut poster frames

The 'SNAP' range features a front loading poster frame. Silver anodised aluminium finish. Individually boxed for protection. Concealed pre-drilled fixing holes.



Prices from **£10.47**

- Easy to use
- Snap open/Snap shut frame
- 25mm profile
- Anti glare cover
- Screws & wall plugs supplied

Can be mounted Landscape or Portrait.

Poster Size	O/A dimensions (w x h) mm	Product order code
A4	240 x 327	SN007
A3	327 x 450	SN008
A2	450 x 624	SN009

Table Numbers and Notices

Prices from **£8.19** per pack

Strong injection moulded (HIPS) high impact styrene table tent. Numbers and letters hot foil blocked. Size: 50 x 50mm. Blister packed for display and protection.



Table numbers Black on White	Table numbers Gold on Black	Table numbers Gold on Wood
Order code:	Order code:	Order code:
TNW 01-10	TNB 01-10	TNX 01-10
TNW 11-20	TNB 11-20	TNX 11-20
TNW 21-30	TNB 21-30	TNX 21-30
TNW 31-40	TNB 31-40	TNX 31-40
TNW 41-50	TNB 41-50	TNX 41-50

Reserved (Pack of 5)		
Order code:	Order code:	Order code:
TTW01	TTB01	TTX01

Clear acrylic menu/poster holders

2mm Double sided Acrylic Poster Holder

Prices from **£3.00**

Best Seller



Double Sided Poster Size	Product code
A4 Portrait	RS038
A5 Portrait	RS037
1/3 A4 Portrait	RS092

Stainless Steel Number Stands

Stainless steel stand with horseshoe clip, weighted base

Enhance your dining tables with our banquet stands and numbers

Prices from **£10.95**

Stand Only. Numbers supplied separately

200mm Stand	RS021
300mm Stand	RS022
400mm Stand	RS023



PVC Showcard / Menu Holder

1.5mm semi-clear pvc. Sold in packs of 5. Base: 75 x 75mm Height: 40mm

Pack of 10



PVC Clip (40 x 75 x 75)	
Product code	RS030

Prices from **£5.67**

PVC Number & Letter Sets

0.7mm PVC Number Sets. Numbered both sides

Prices from **£8.25**



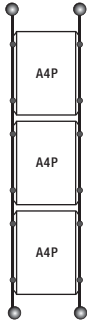
Single replacement numbers or letters (125 x 90mm)	
Product code	RS024

Set 01 - 10	BN001
Set 11 - 20	BN002
Set 21 - 30	BN003
Set 31 - 40	BN004
Set 41 - 50	BN005
Set A - Z	BN006

Then state number or letter required and quantity.

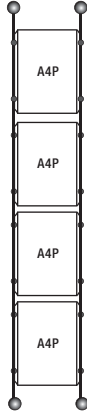
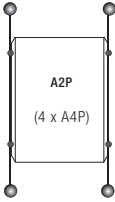
Window Poster Display kits with Suction pad fixing

A highly economical solution to create powerful window & internal displays, held in position with suction pads. No installation required - just assemble & fix to window. Each kit is supplied with 2 rods, 4 clear suction pads, acrylic pockets, supports & full assembly instructions.

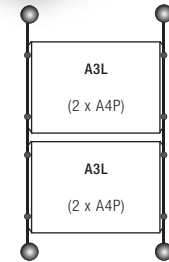
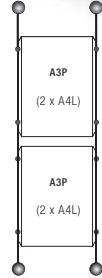


Prices from
£45.00

Hassle Free Window Display
No installation required



Promote your
Christmas Party Nights, Event
Menu or Function
in style



Suction Kit Codes	SK001	SK005	SK003	SK007	SK008
-------------------	-------	-------	-------	-------	-------

Pre-Printed Drop Down Banners

Pre-printed PVC banners ideal for advertising forthcoming events. Indoor or outdoor use. Printed one side, supplied with 4 locking clips.



Prices from
£57.00

Product code	QB003
Banner size	(2000x600mm)

Product code	QB002
Banner size	(2000x600mm)

Freestanding Pop Up Banner System



- Single sided
- Quick and easy to assemble
- Height of banner 2m
- Flexible free-standing banner display
- Lightweight carry bag

Prices from
£27.30

Banner Width	Banner Height	Product Code
600mm	2m	QB008



Banner not included



Our drop down banners can be fitted into the freestanding Pop Up System as shown.

Example of freestanding display with drop down banner fitted.

Locking clips supplied with all banners

The **greater** the loading - the **tighter** the grip...

- Fast application
- No tools needed
- Relocatable and reusable
- Unbeatable grip - up to 45 kgs loading

